

# MONTHLY MEMBERSHIP PROGRESS REPORT

LOCATION GEORGIA

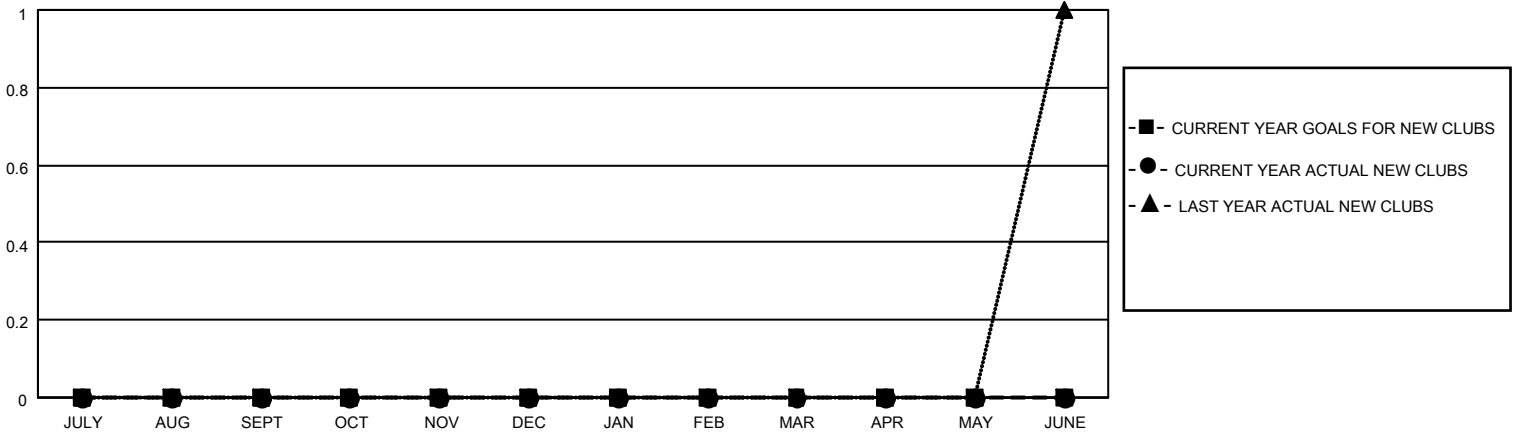
District 18 N

Results as of: 2/28/2023

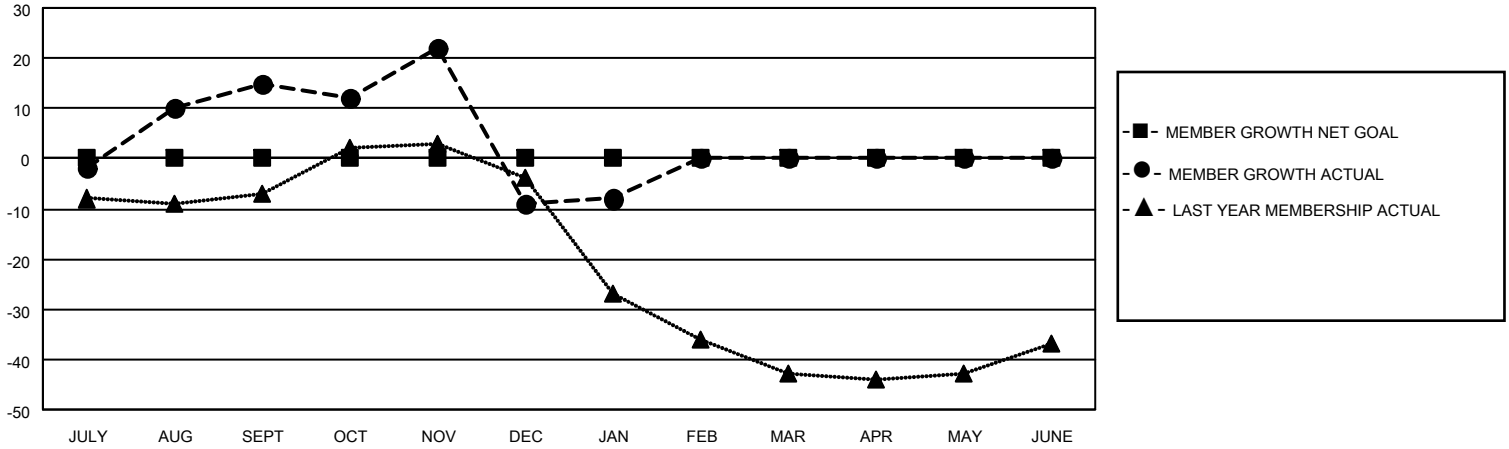
Clubs			
RESULTS FOR 2022-2023			
QUARTER	NEW CLUB GOAL	NEW CLUBS	DROPPED CLUBS
JULY/AUG/SEPT	0	0	0
OCT/NOV/DEC	0	0	1
JAN/FEB/MAR	0	0	1
APR/MAY/JUNE	0	0	0

Members			
RESULTS FOR 2022-2023			
QUARTER	MEMBER GROWTH NET GOAL	MEMBER GROWTH ACTUAL	DROPPED MEMBERS ACTUAL (including transfers)
JULY/AUG/SEPT	0	32	15
OCT/NOV/DEC	0	16	40
JAN/FEB/MAR	0	45	22
APR/MAY/JUNE	0	0	0

**GOALS AND ACTUAL NEW CLUBS CUMULATIVE**



**GOALS AND ACTUAL MEMBERS CUMULATIVE**



**DROPPED CLUBS: 2**

**20 CLUBS OF 53 ADDED 1 OR MORE NEW MEMBERS**

**GENDER DISTRIBUTION**

**DROPPED MEMBERS**

DECEASED	12
CLUB CANCELLED	12
OTHER	53
<b>TOTAL</b>	<b>77</b>

[CLICK HERE FOR CUMULATIVE MEMBERSHIP DATA](#)

MALE	720 (63.05%)
FEMALE	422 (36.95%)
NON BINARY	0 (0.00%)
PREFER NOT TO ANSWER	0 (0.00%)

TOTAL FAMILY UNIT MEMBERS 188

FAMILY MEMBERS PAYING HALF DUES 96